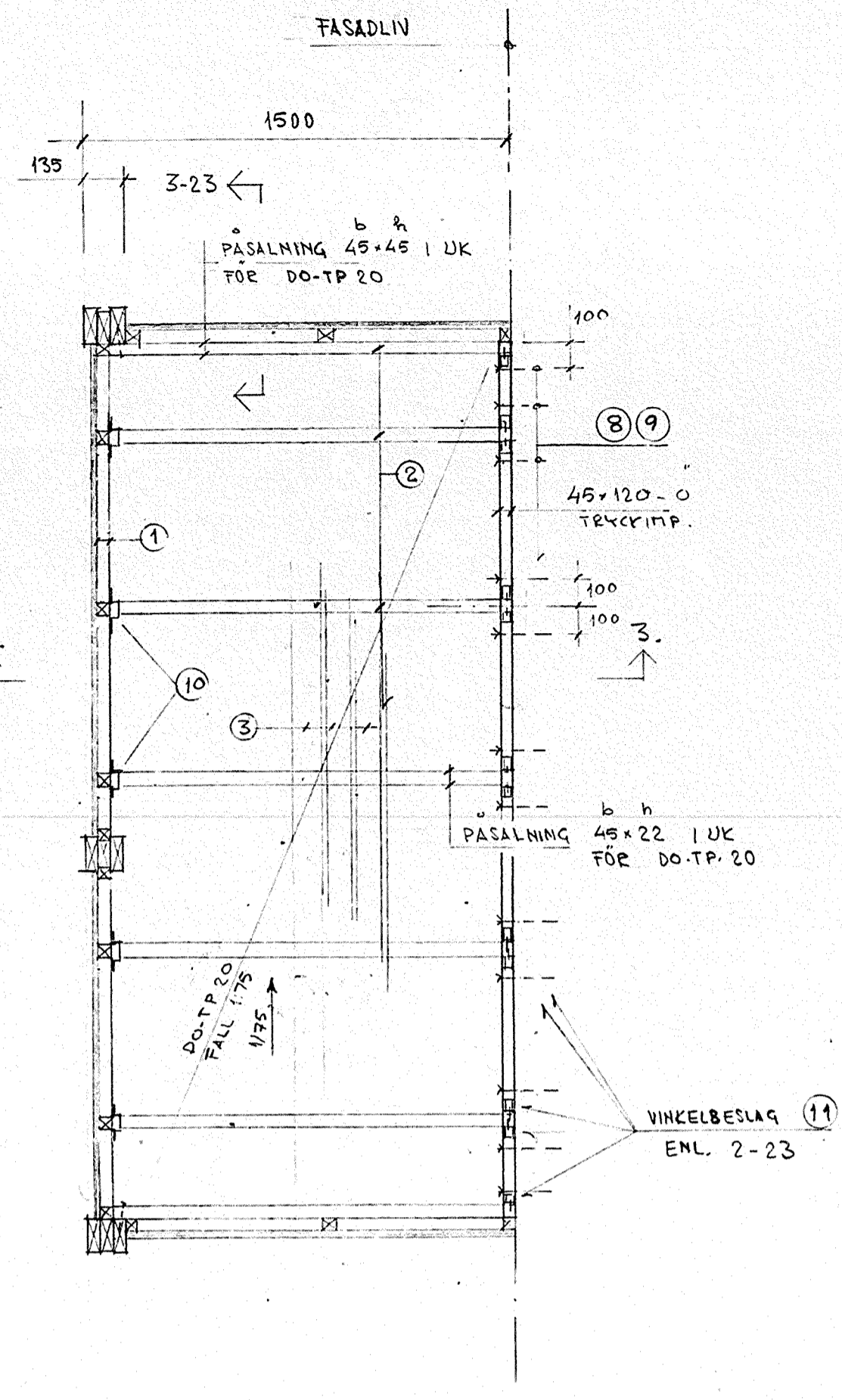


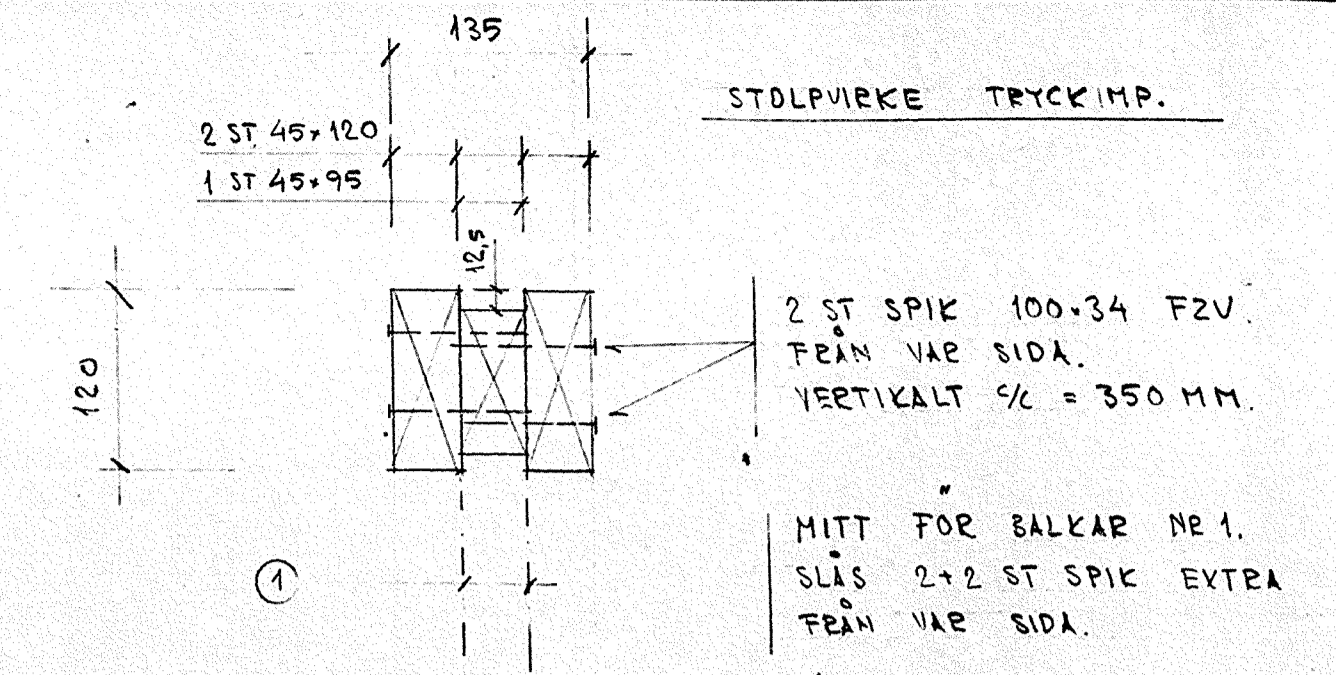
1 ENTREEPLAN  
1:20



2 OVERPLAN  
1:20



3  
1:20

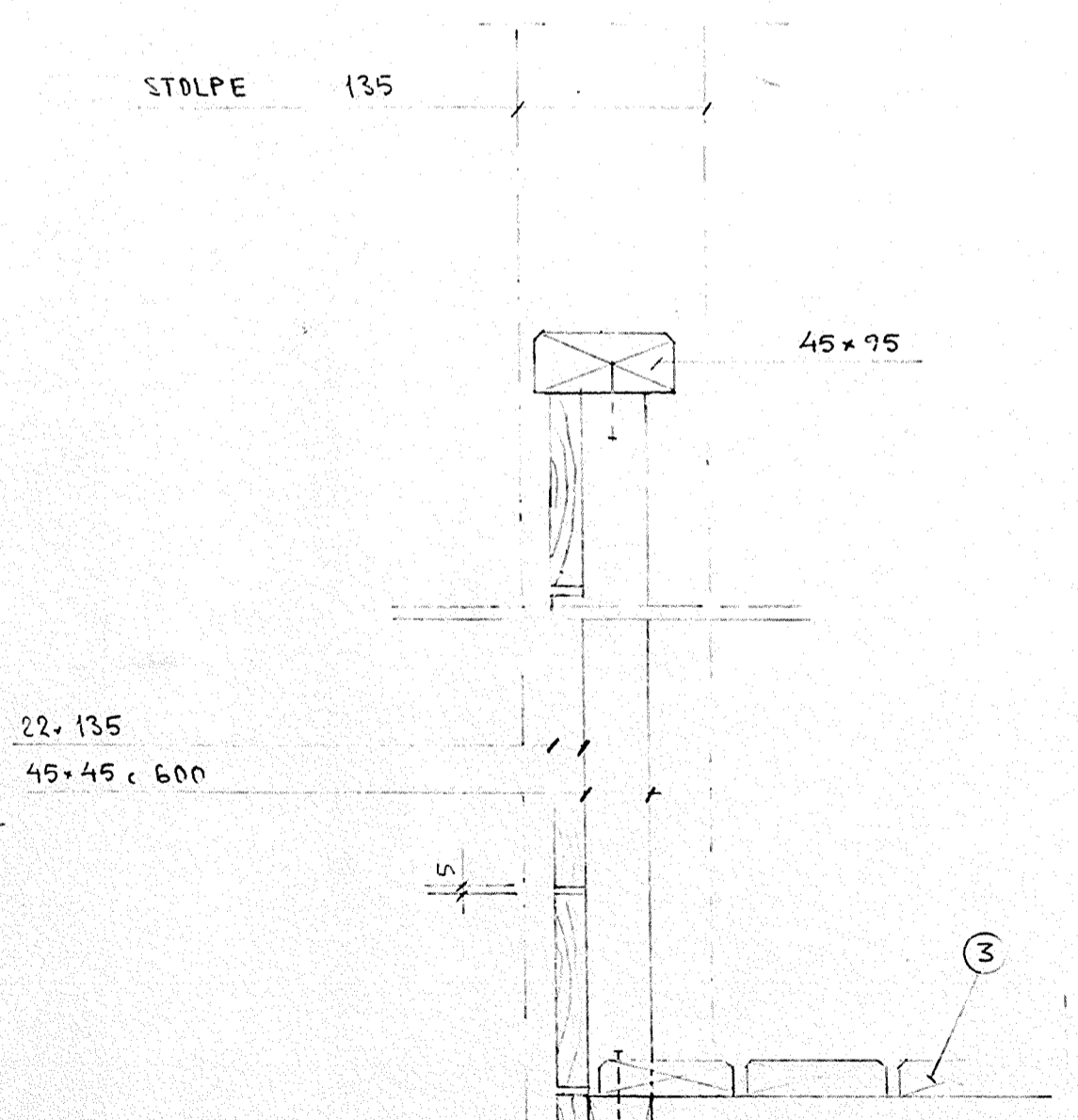


4. STOLPE 1 & 3. (1 PRINCIP AVEN STOLPE 2)  
1:5

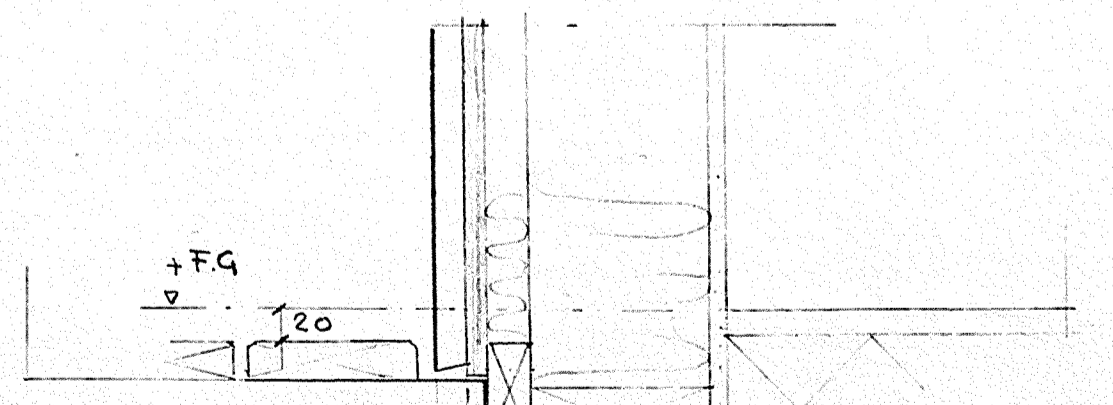
BETECKNINGAR

- ① 45x220 T20 TRYCKIMP.
- ② 45x120 - 0 1/4 600. -"-
- ③ 28x95 TEALL (10 MM SPRINGA) -"-
- ④ 45x95 - 0 -"-

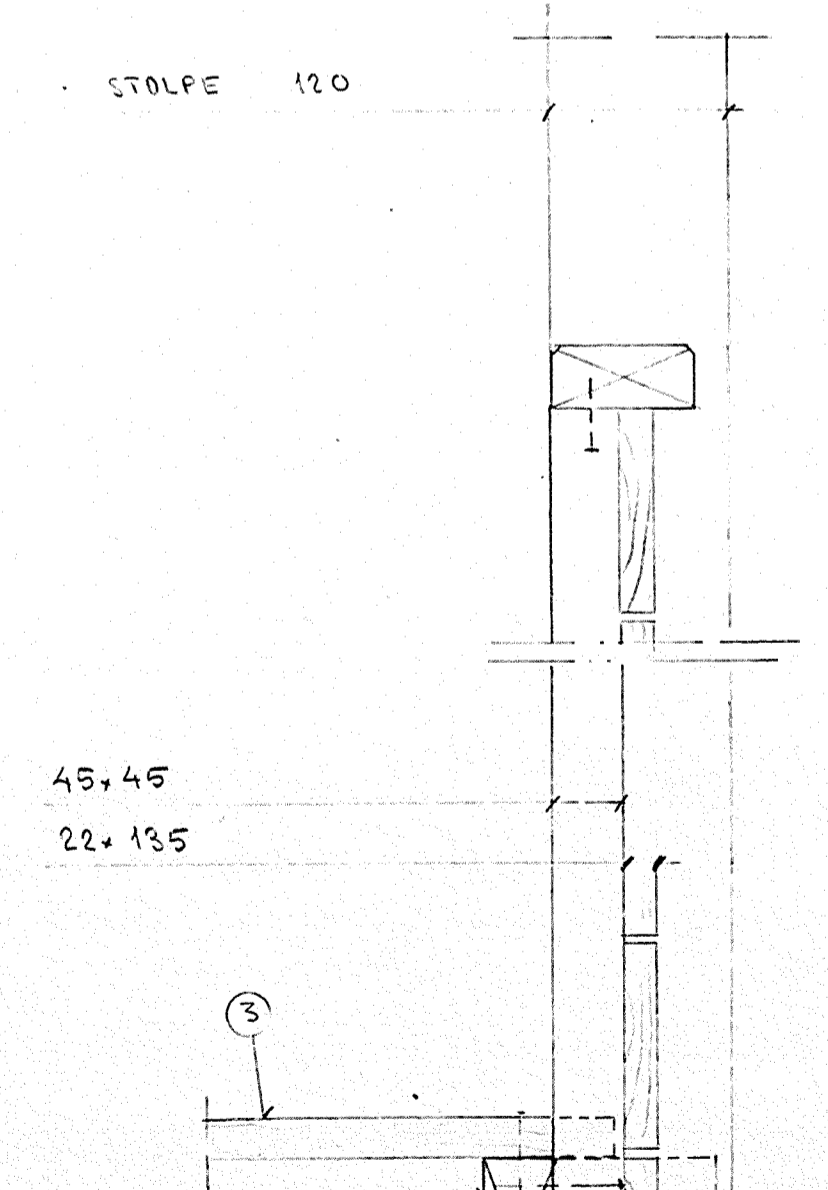
- ⑧ SERUV T65 10x140 FZV
- ⑨ BRICKA S4B 11x30 FZV
- ⑩ BALKSKO BMF 45x105 FZV. (GUNNERO)
- ⑪ VINKELBESLAG BMF 40390 FZV.
- ⑫ T65 12x140 D40 FZV.
- ⑬ BRICKA S4B 14x40 FZV.
- ⑭ FISCHER S-PLUGG S16



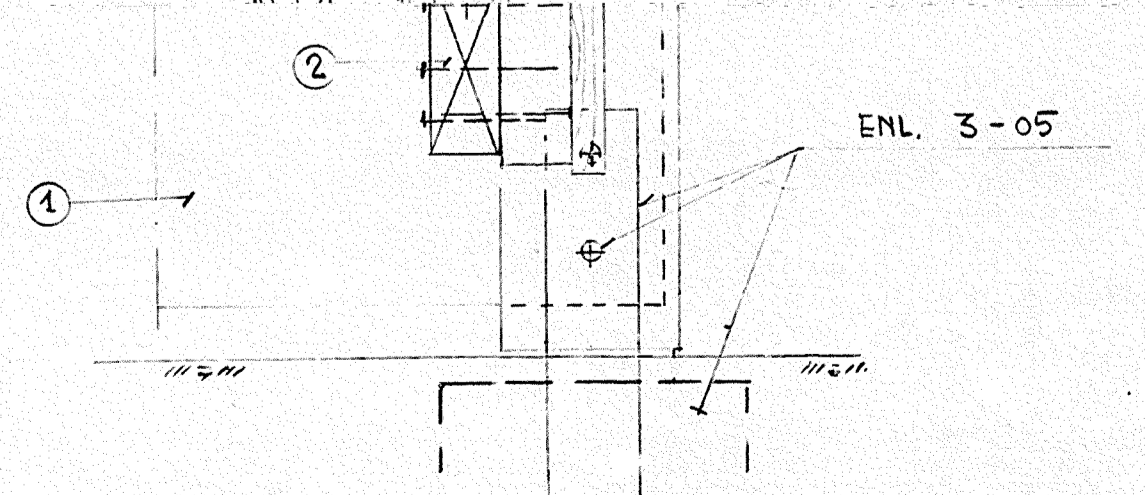
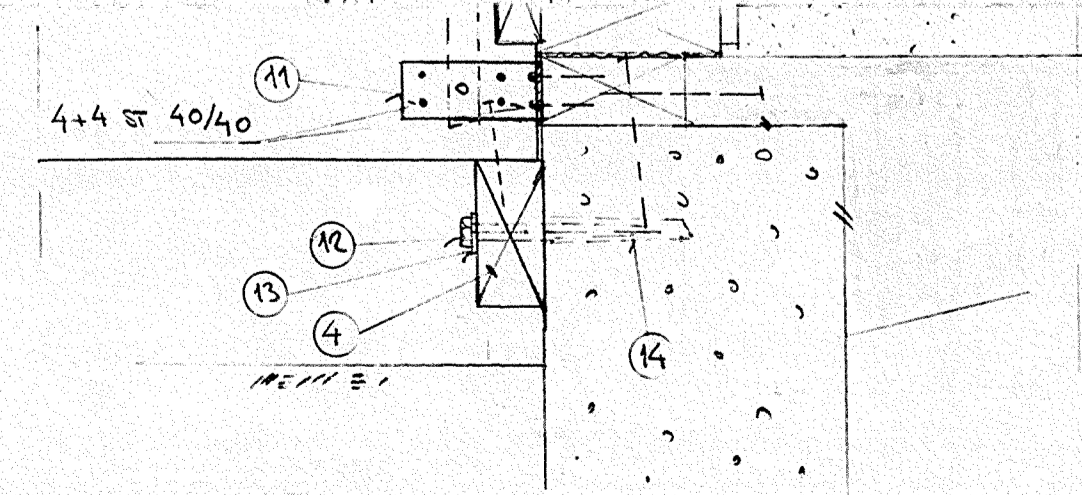
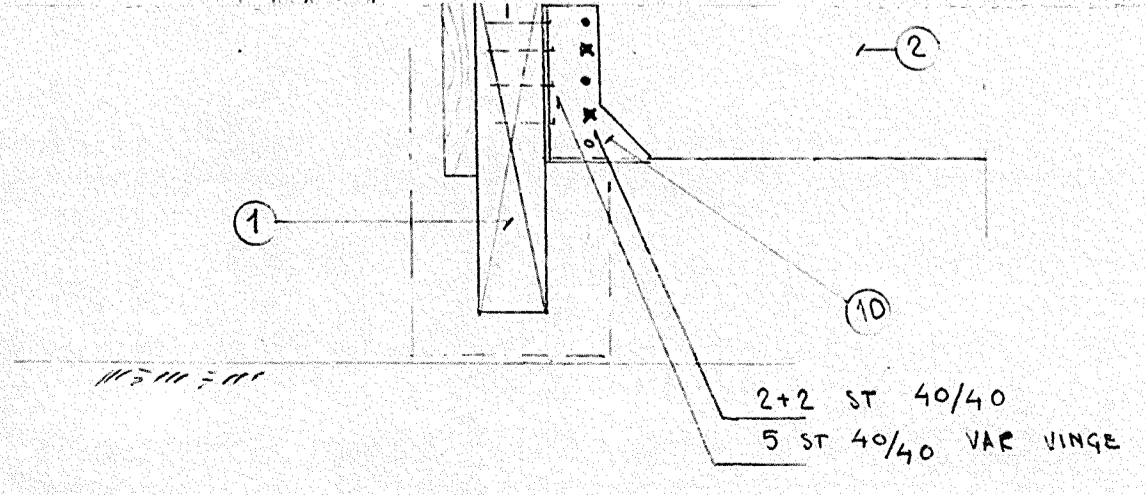
5.  
1:5



6.  
1:5



7.  
1:5



HINDEN 1-42  
BYGGNADSLÖV: 1977-09-13,  
§ 544

ARBETSRTNING

PAUL BONDESSON  
INGENJÖRSBYRÅ AB  
Lilla Sällskapetsg 14  
127 33 Skärholmen · Telefon 08/88 04 05

plätzer  
PLATZER BYGG AB  
Hallonbergsplan 5  
Fack  
172 07 Sundbyberg  
tel. 98 05 80

REV	ANT	REVIDERINGEN AVSER	SIGN	DATU
A		STOLPE 2 FÖRLINGD N.N. 06.177.		
KV. HINDEN, BOTKYRKA KM				
HUSTYP B, B*, Bs				
BALKONG				
ARBETSNUMMER		51584	RITNINGNUMMER	
77-09-29			K: 22	